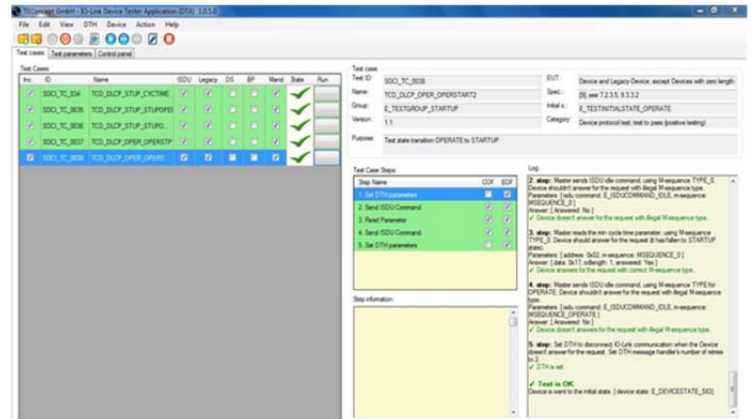




Use IO-Link Device Tester

Universal · Smart · Easy



Overview

Every manufacturer of an IO-Link compliant device needs to issue a manufacturer declaration of compliance.

This requires that numerous tests that are defined in the IO-Link test specification need to be executed.

This device tester simplifies the execution of many of these tests in particular protocol compliance tests.

The **TEConcept Device tester** is powered by an external 24V power supply, it is controlled via an **USB port** and it offers a standard M12 connector to connect the devices under test "DUT".

A **PC-software tool** asks for the IODD of the DUT and automatically adjusts most of its test procedures parameters according to the capabilities of the DUT.

The test cases are defined by an XML-files that are accessible by the user.

Additional tests like checking the validity ranges of device specific parameters can easily be added by the user by adding test procedures in xml.

Deliverables

- Device Tester Box
- 24V power supply
- Device Tester PC tool (Windows based)
- Test Case Creator Tool

Device Tester Features

- Complies to IO-Link Test specification V1.1.2
- Approved by IO-Link Quality Working Group
- External 24V/300mA power supply
- M12 IO-Link master connector
- DIN-rail mount
- USB control
- Extendible with customer specific test cases

Device Tester PC Application Features

- Graphical User Interface
- Test Report generation in PDF format
- Selectable Test Case execution
- Step-By-Step test report
- Hex-Trace of IO-Link communication
- Log- and Trace File export
- Additional Control Feature (USB-Master)
- Session store/restore (project file)
- Firmware update feature

Test Case Creator Features

- Window based user interface for specification of most needed customer specific test cases