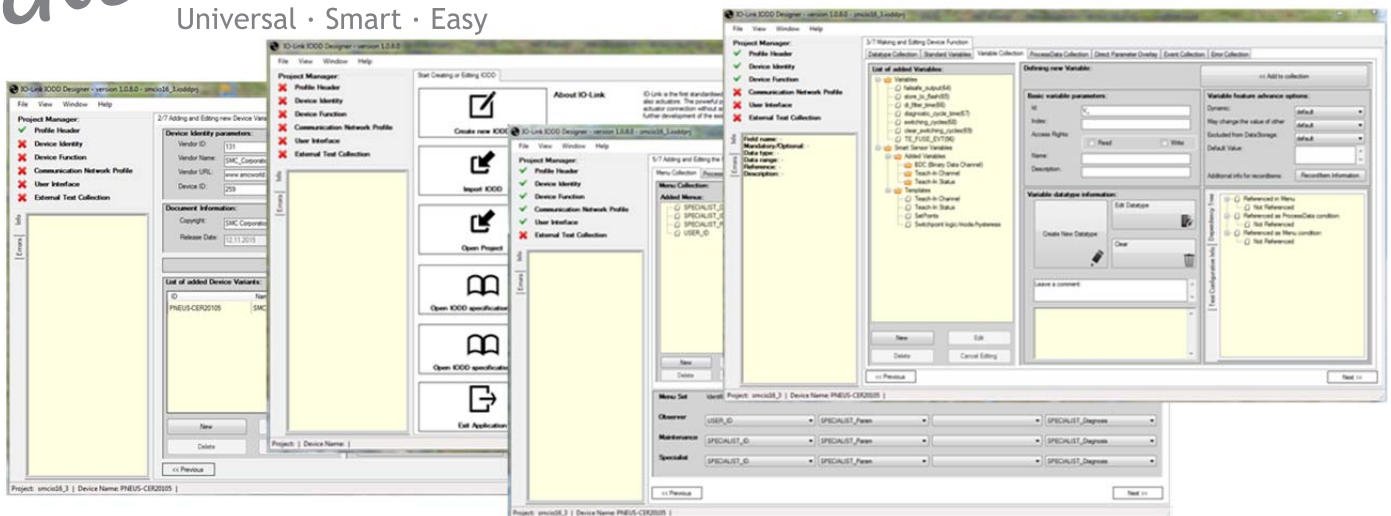




Use IO-Link IODD Designer

Universal · Smart · Easy



Overview

IO-Link devices need to be described by IO-Link Device Descriptions called "IODD". These IODD are complex structured XML files with numerous restrictions and interdependencies. The Generation of an IODD can become a laborious and tedious task and it is difficult to maintain integrity between device and IODD in case of modifications.

TEConcept has developed an IODD Designer that simplifies the generation of IODDs significantly.

No XML know how is required to generate an IODD. The user basically has to fill out text fields. For every text field a info box is available that shows related information with reference to the IO-link specifications. The IODD Designer supports creation of new IODDs from scratch as well as import and modification of existing IODDs.

Generated IODDs can be checked and "stamped" by using the "official" IODD checker from the IO-Link webpage.

Deliverables

- Installer for PC-Software

IODD Designer Features

- Complies to IO-Link Interface Specification V1.1.2
- Complies to current IODD-specification (V1.1) and V1.0 (August 2011)
- IODD import supported (for view and edit)
- V1.1/V1.0 generation from the same data set.
- Help/Info support for entries
- IODD checking and stamping support based on IODD checker of the IO-Link community
- Installer for Windows 7/8/10
- Current project status can be saved and re-stored
- Errors are detected and corrected during entry
- Context sensitive information on entries with reference to IODD specification
- Smart Sensor profile supported

Advantages

- Speed up of IODD generation
- XML know how not required
- Import and modification of IODDs supported
- Assures consistency related XML-elements in the generated IODD
- Extended error checking